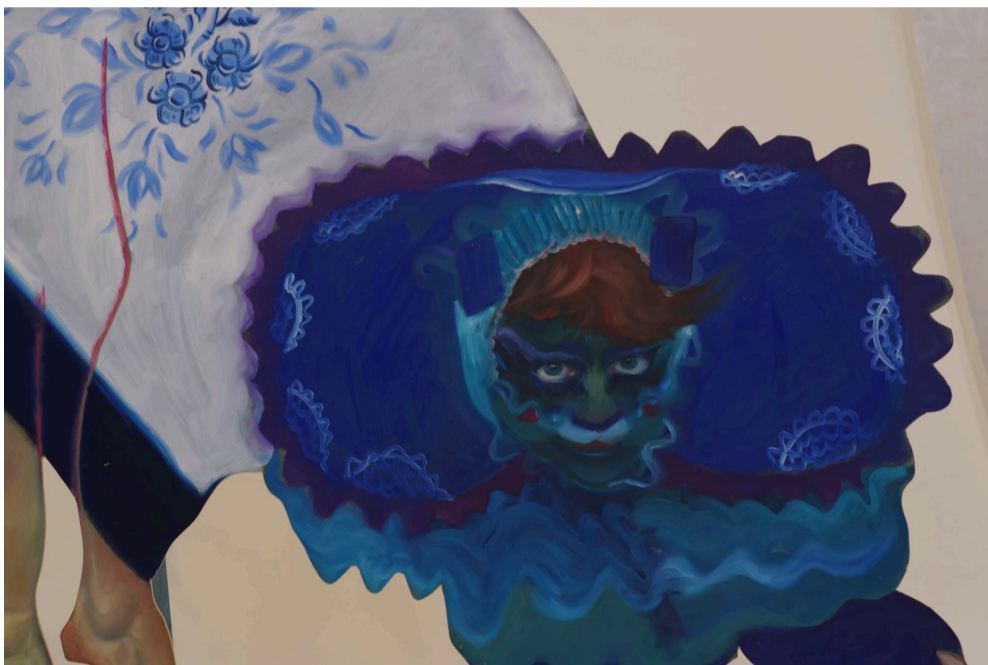


# Spirit to Matter: Alchemy in the Making

LCB Depot's exhibition & events programme highlights work from different creative practices every month.

This month the focus is on art including 2D, 3D, film and performance with work from our commissioned artist respondents to the open call. Exhibitions and events run from **28<sup>th</sup> October – 22<sup>nd</sup> November 2024**

Find out more [@lcbdepot](https://www.instagram.com/lcbdepot) or at [lcbdepot.co.uk/event/art2024/](https://lcbdepot.co.uk/event/art2024/)



## *Osseart*

Ruby Waage Townsend

What occurs after you bake yourself a new head?

Enter here into the realm of the punished demon, Osseart, who haunts the streams and the puddles, tormenting the forests, an imprisoned beast now free, his chains darkening the vast pink sea, long fingers poised and ready to pounce. Trade him your first caught fish and keep the demon at bay (for now). Summon him with the chant below;

Griepke, griepke, grauw, zonder tand en met een mouw.

Ossearts tale is an extended pandora's box, spilling with secrets and stories, intertwining family names, truth, or history, presented like a fable, drawing in various elements of Dutch folkloric tales, deceptions and illusions. Fish become vessels which hold multiple possibilities, the idea of trading fish

congruent throughout the piece, representing mental health, trauma, resilience, manifestation, epigenetics, inspired by the story of Osseart, keeping the beast at bay, or manifesting the beast within for survival.

## **Artist Bio**

My current artistic practice takes the form of a painterly performance; exploring and expanding the medium of painting, creating interactive worlds that resemble theatre sets; incorporating painting, installation, costume, performance and spoken word. Here I reference and wish to break the silence and raise awareness on themes such as domestic abuse and the impact on the psyche. I do this by utilizing folktales, depicting the illusory nature of unhealthy domestic spaces. I build flimsy, beautiful worlds that entice the audience in. My current project explores ideas surrounding cognitive dissonance and the aftermath of trauma and is entitled 'The Spellbound series'. I reference self-reliance; I incorporate and utilize the self-portrait and enact all roles both behind the set and in my paintings, using costume to break the binary nature of fairytales and explore the complexities of the psyche- I am the protagonist and antagonist, the malevolent beast and the damsel in distress.

I am currently creating a body of work for an East Midlands gallery and working as a gallery space manager and artist in residence at Ilkeston Contemporary Arts. I have exhibited in various locations across the East Midlands as well as London, am a Two Queens Studio Holder, and will be attending the RCA in 2025.

[@rubywaagetownsendart](https://www.instagram.com/rubywaagetownsendart)